

The background features a light blue sky with two large, white, stylized clouds at the top. Numerous small, dark grey raindrops are scattered throughout the sky. At the bottom, there are several colorful, multi-faceted hills in shades of red, green, purple, and yellow, each topped with a small black silhouette of a witch's hat.

SOMETIMES THE RAIN, SOMETIMES THE SEA
BESSIE PUPPET

Lindsey Silver

PROPOSAL

- Design & fabricate BESSIE from *Sometimes the Rain, Sometimes the Sea*
 - Fit puppet to roommate but design allows for adjustments
 - Puppet doesn't restrict required movements in script
- Learn how to utilize standard puppet making materials (foam, bamboo structure, eye mechanisms, etc.)
- Maintain a budget of ~\$500



SYNOPSIS

A modern retelling of the Little Mermaid (kind of), where a raincloud falls in love with a human. The show is narrated by Hans Christen Andersen - though you won't know that for a bit - and as he tells the story his real life relationships begin to combine with the story forcing him to reflect on himself.

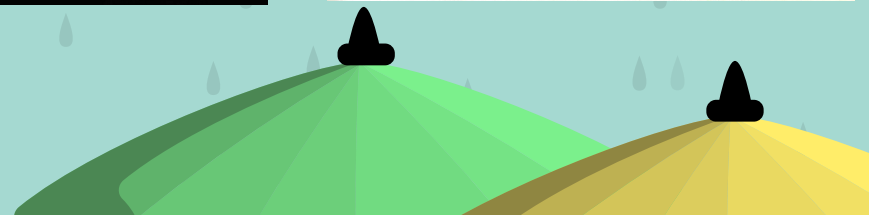
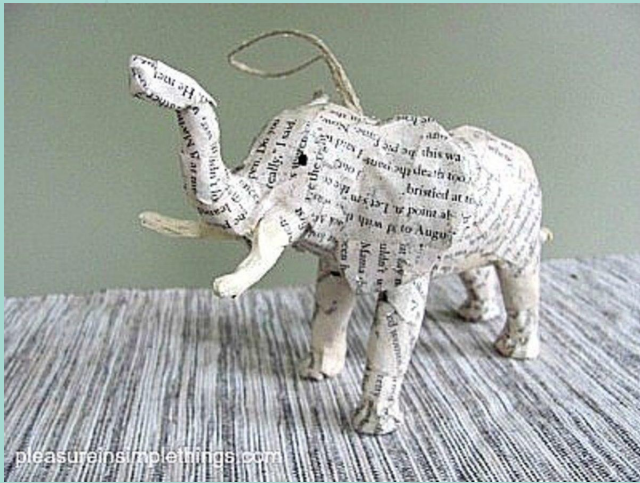
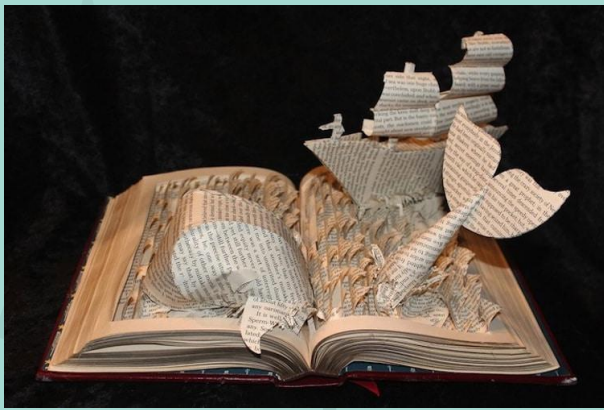


MOVEMENT TRACKING

SOMETIMES THE RAIN, SOMETIMES THE SEA
PUPPET NEEDS

PAGE	MOVEMENT	OBJECT	NOTES
BESSIE			
7	sitting with tea	teacup	
38	"creeping" behind		dressed as SEAWITCH
39	holding glass of wine	glass of wine	
40	grabbing book & reading	book	
41	runs away		
43	ripping pages out of book	book & loose pages	
50	swimming across stage		
60	running across stage being chased		
67	dramatic collapse to the floor		
68	dies		
72	body becomes patch of grass and dandelions		

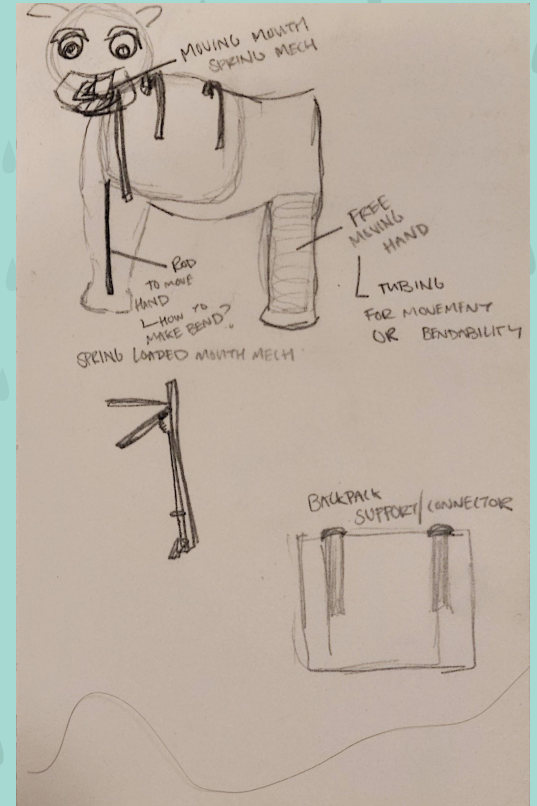
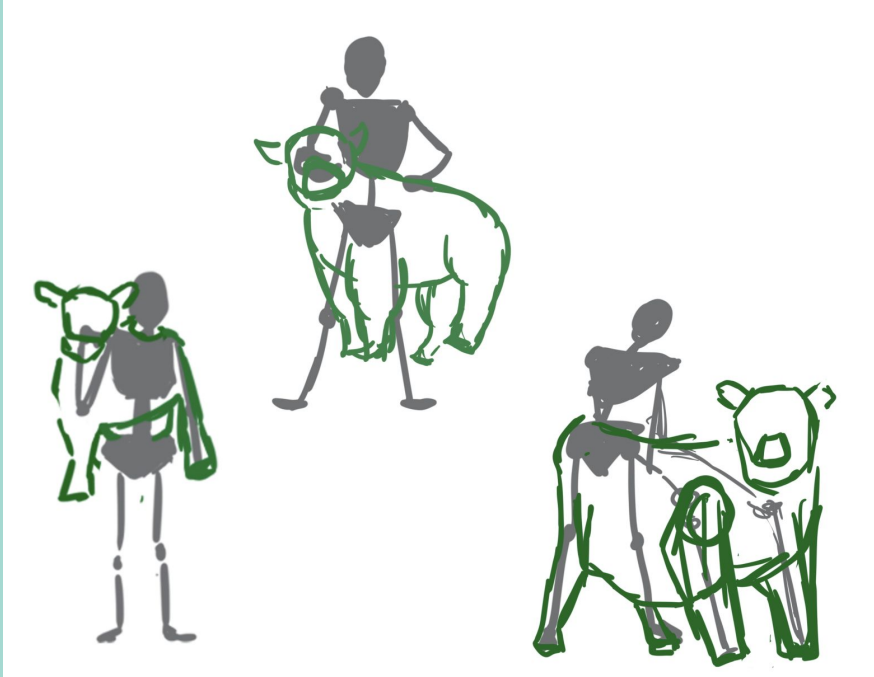
RESEARCH/CONCEPT



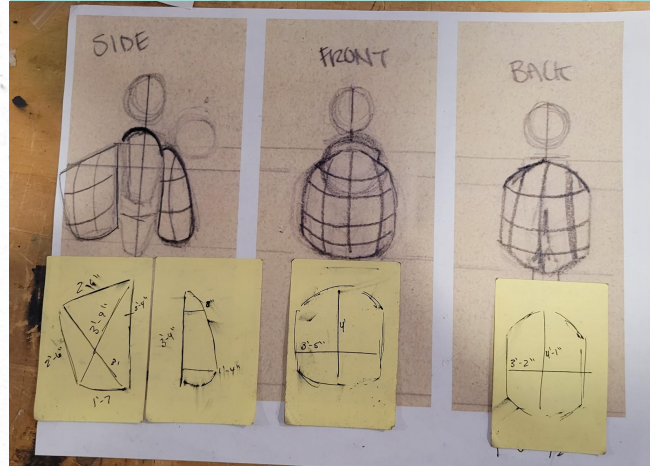
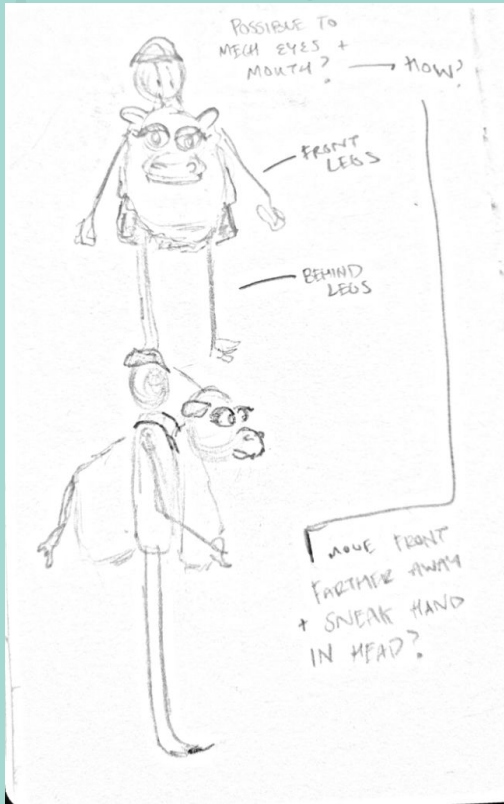
DESIGN INFLUENCES



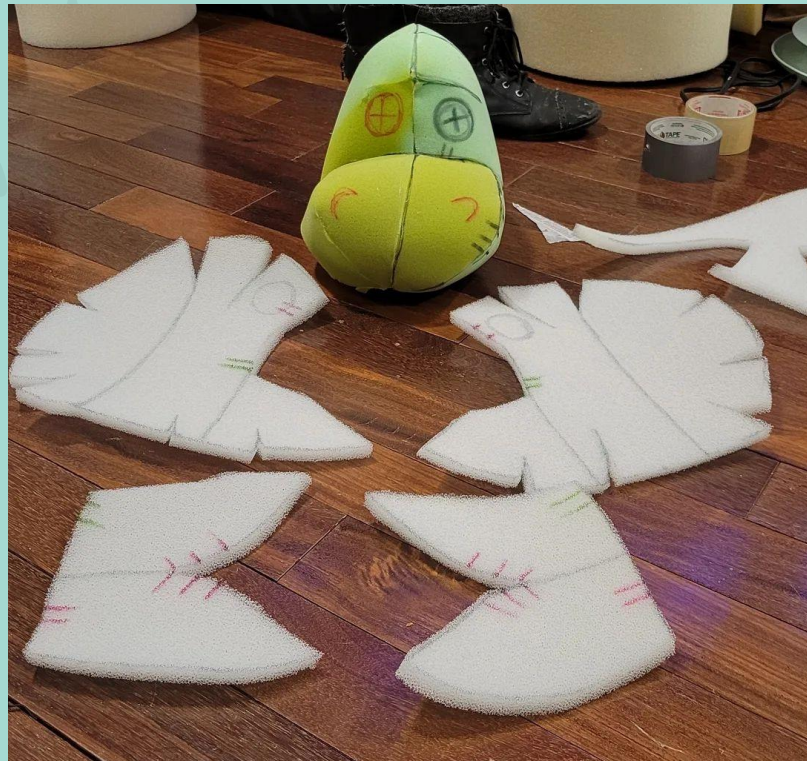
INITIAL SKETCHES

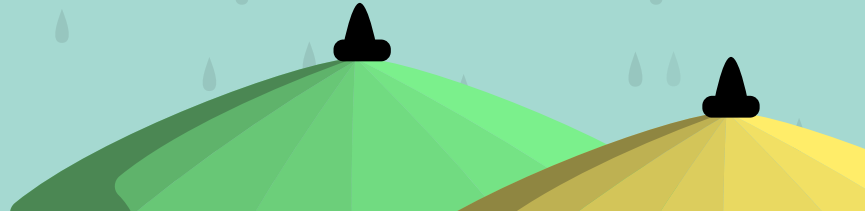
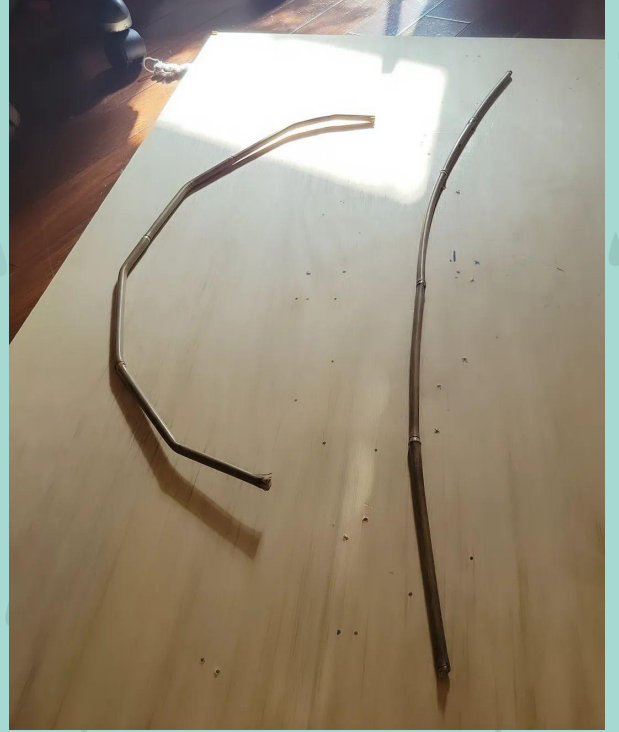


FINAL SKETCHES



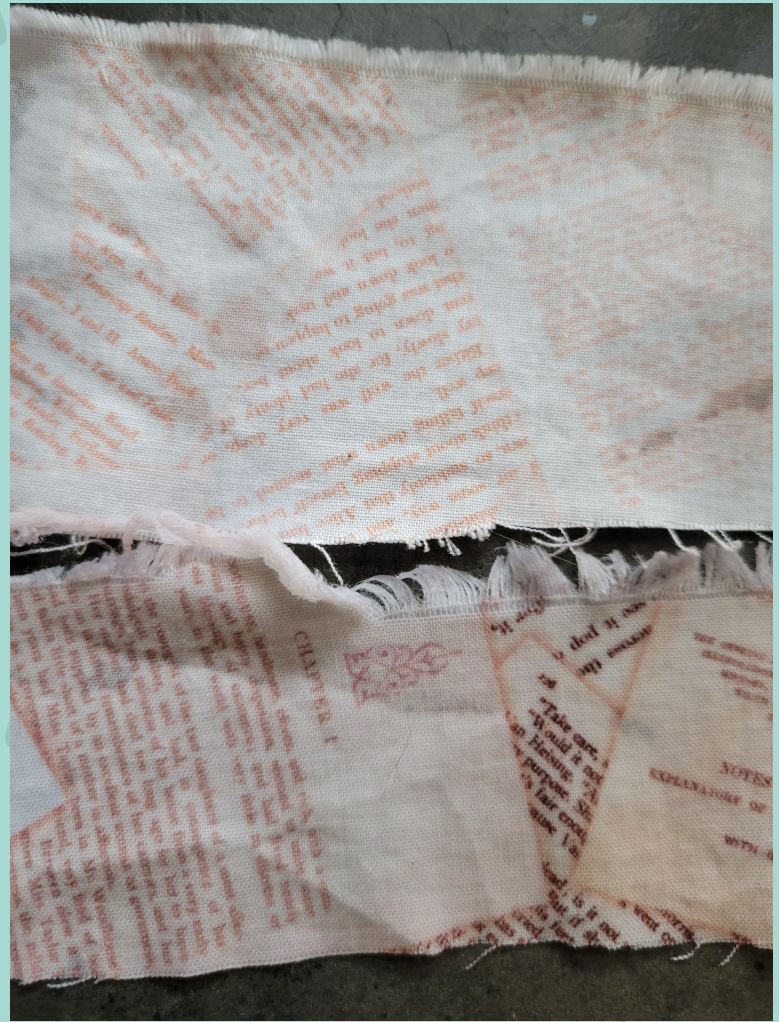


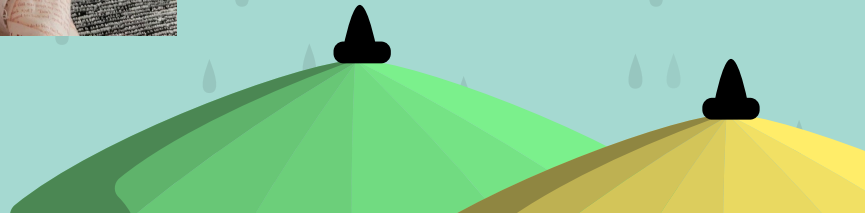
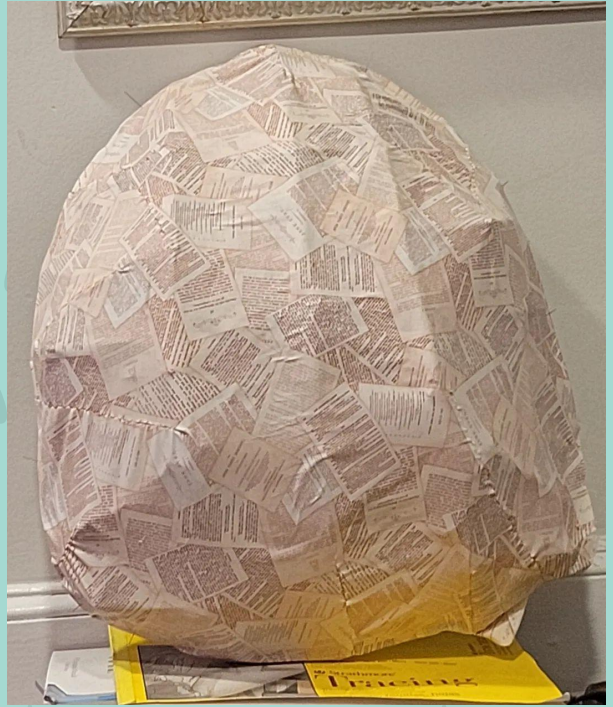
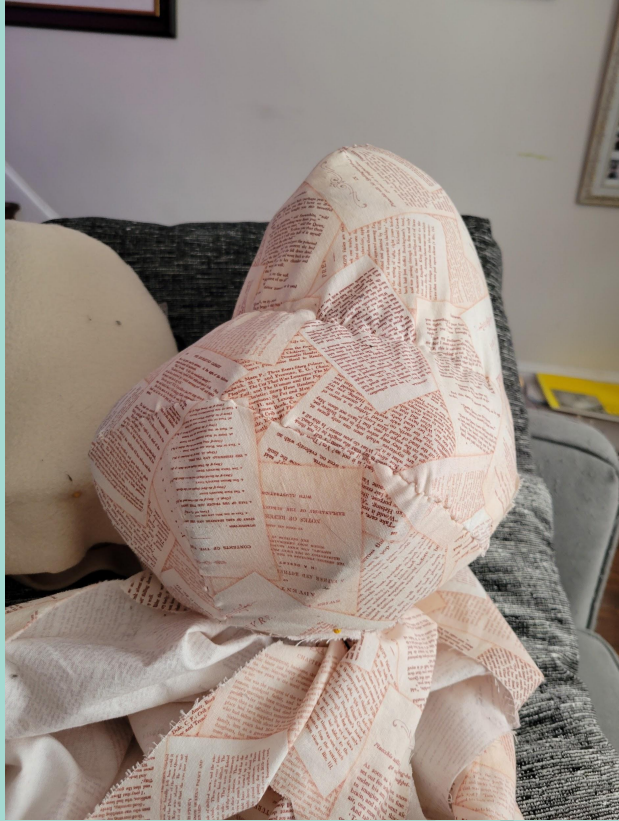


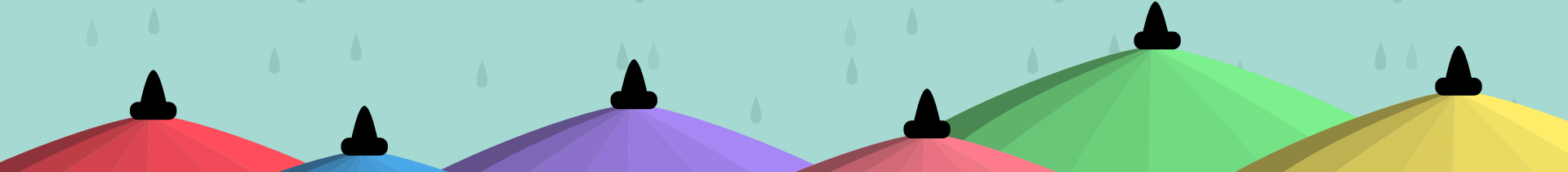






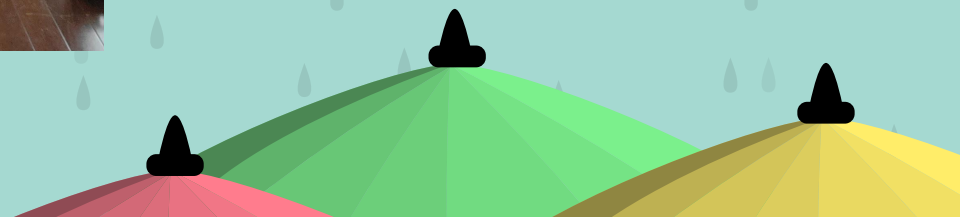
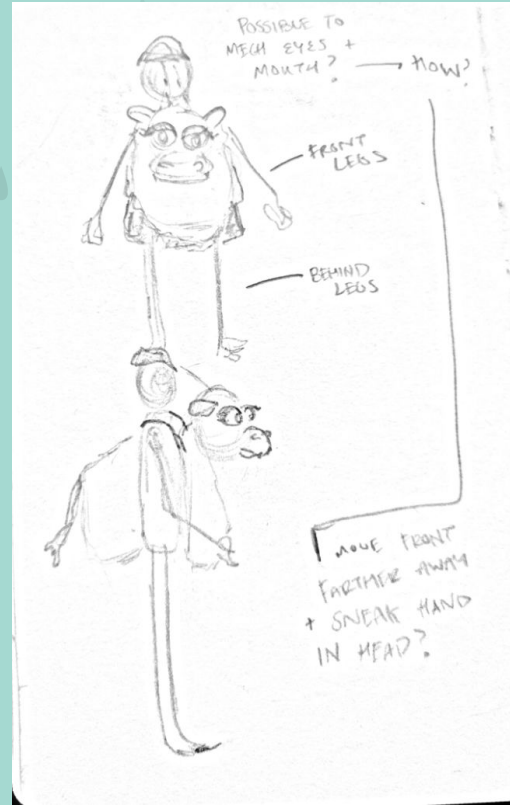












SPECIAL THANKS

- Rob Cutler
- Chris Haig
- Susan Barras
- Shaun, Ace, Amir
- Nutmeg

